

 **ROOFFIN**



Installation Instructions

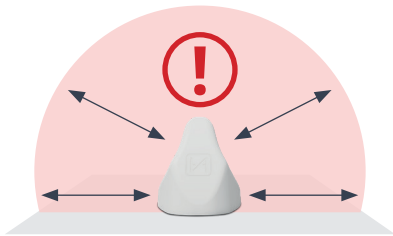
Installation Instructions

Recommended distances between the **ROOF FIN** and the roof rails, roof windows, satellite antenna and PV system.

Recommended distances

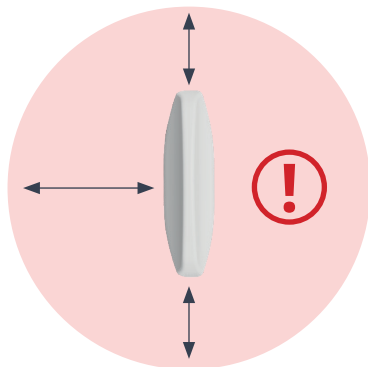
- Roof rails
- Awning
- Aluminum profiles
- Skylight
- Ventilation cover

! at least 50 cm



- SAT antennas
- FM/DAB antennas
- DVB-T antennas

! at least 50 cm /
recommended 75 cm



- PV and solar system
- Storage box (metal or plastic)

! at least 75 cm /
recommended 100 cm

Installation on the Roof

The **ROOF FIN** from the **CAMPERNET** set is intended for installation on the metal roof of a motorhome, panel van or caravan.

The installation and installation space instructions apply to both variants, whether in the colours black or white. For good reception, the **ROOF FIN** must be positioned as high as possible above the ground. The **ROOF FIN** fits exactly onto a sheet metal roof's rib/elevation of the panel van.



✓ Mounting on the roof, as high as possible above the ground.



✗ Do not install under a motorhome's or caravan's ceiling.



✗ Do not install on the side, front or back wall.

Sheet metal / Aluminum Roof

For a long range, there must be a metal plate present under the **ROOF FIN**. In box vans, the sheet metal roof fulfils this condition. For composite panels, there must be a metal plate made of sheet metal or aluminum positioned on the outside directly below the **ROOF FIN**.

Application examples:

- Box vans
- Composite panels with aluminum sheet on the outside



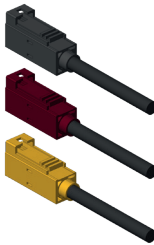
Installing the ROOF FIN is useful on metal roofs only. The ROOF FIN works only if there is a metal plate of at least 50 cm x 50 cm directly located under it.

Antenna cables

Code A, colour black / 5G diversity

Code D, colour bordeaux / LTE + 5G

Code K, colour curry / WLAN 2.4 GHz, 5 GHz, 6 GHz



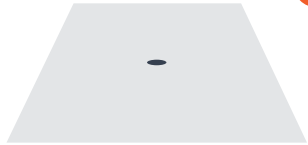
**Extension of the antenna cable max. 5 m
Recommended cable type for extension: Leoni Dacar 302**



Installation Instructions
ROOF FIN



- 1. ROOF FIN -hole pattern-**
ROOF FIN with cable routing vertically downwards.
 Drill diameter 24 mm.
Contact a specialist workshop!



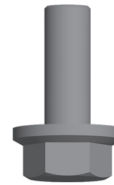
- 2. Clean roof surface**
 Clean the mounting area of the motorhome or caravan with a dirt and grease-dissolving cleaner until the surface is clean. Do not use acid! Let the surface dry!
For an appropriate cleaner, please contact your vehicle's manufacturer!



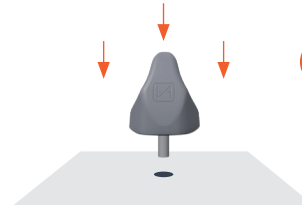
- 3. Clean adhesive surface**
 Clean the adhesive surface of the **ROOF FIN** with a dirt and grease-dissolving cleaner. Do not use acid! Let the surface dry!



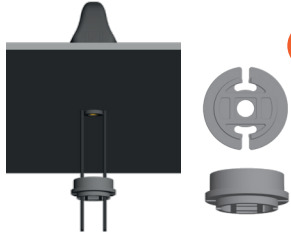
- 4. Glue bead**
 Apply two closed beads of adhesive to the underside of the **ROOF FIN**. Excess glue collects in the circumferential groove.
We recommend DEKALIN's or Sikaflex's assembly adhesives.



- 5. Screw**
 Until the installation adhesive has hardened attach the **ROOF FIN** with a screw to the vehicle's sheet metal roof. The screw is screwed into the brass sleeve of the **ROOF FIN**.



- 6. Place the antenna correctly**
 Thread the antenna cable through the hole in the roof. Place the antenna with mounting adhesive on the roof and press firmly until the adhesive is evenly distributed.



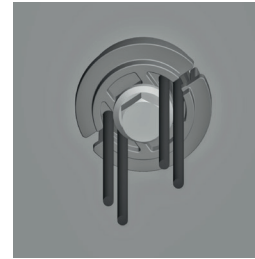
- 7. Attach the clamping piece**
Push the antenna cables individually through the side grooves and snap them into the slots.



- 8. Press the clamping piece**
Press the clamping piece into the roof opening. It provides abrasion protection for antenna cables.



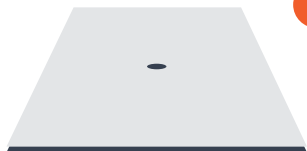
- 9. Screw**
For sheet metal roofs, screw the enclosed screw from below through the clamping piece into the brass sleeve of the antenna and tighten it by hand (max. torque: 1 Nm).



- 10. Completion of assembly**
When further laying the antenna cable, the bending radius must **not be less than 15 mm**. Otherwise this will result in permanent damage to the antenna cables and a deterioration in the antenna range!

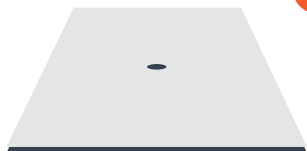
ROOF FIN

ⓘ Assembly on multilayer



1. ROOF FIN hole pattern

ROOF FIN with cable routing in the center, vertically downwards.
Drill diameter 24 mm
Contact a specialist workshop!



2. Clean roof surface

Clean the mounting area of the motorhome or caravan roof with a dirt and grease-dissolving cleaner until the surface is clean. Do not use acid! Let the surface dry!
For an appropriate cleaner, please contact the vehicle's manufacturer!



3. Clean adhesive surface

Clean the adhesive surface of the **ROOF FIN** with a dirt and grease-dissolving cleaner. Do not use acid! Let the surface dry!



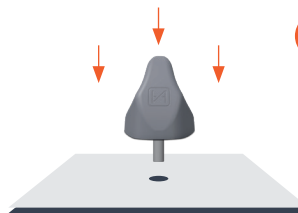
4. Glue bead

Apply two closed beads of adhesive to the underside of the **ROOF FIN**. Excess glue collects in the circumferential groove.
We recommend DEKALIN's or Sikaflex's assembly adhesives.



5. Screw in the threaded rod

Screw the threaded rod with the short threaded piece into the brass sleeve of the **ROOF FIN** as far as it will go.

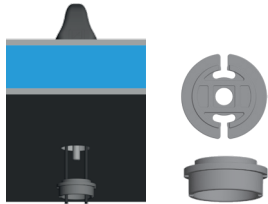


6. Place the antenna correctly

Thread the antenna cable through the hole in the roof, as well as the open end of the threaded rod. Place the antenna with mounting adhesive on the roof and press firmly until the adhesive is evenly distributed.

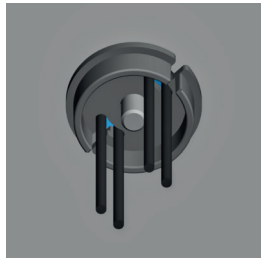
ROOF FIN

ⓘ Assembly on multilayer



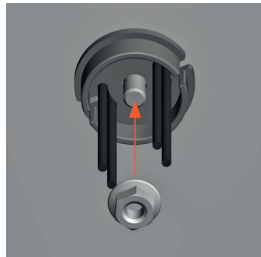
7. Attach the clamping piece

Push the antenna cables individually through the side grooves and snap them into the slots.



8. Press the clamping piece

Press the clamping piece into the roof opening. It provides abrasion protection for antenna cables.

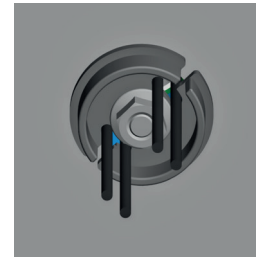


9. Screw nut

Screw the screw-nut onto the threaded rod and tighten them by hand (max. torque: 1 Nm).

ROOF FIN

ⓘ Assembly on multilayer



10. Completion of assembly

When further laying the antenna cable, the bending radius must **not be less than 15 mm**. Otherwise this will result in permanent damage to the antenna cables and a deterioration in the antenna range!

ROOF FIN Data Sheet

Electronics

Mobile frequencies 698 MHz to 960 MHz, 1424 MHz to 2170 MHz, 2490 MHz to 2690 MHz, 3200 MHz to 3900 MHz

Cellular MIMO 2x2

Mobile antenna gain max. 5 dBi

WiFi frequencies 2300 MHz to 2490 MHz

WiFi bands 1 to 14

WiFi MIMO 2x2

WiFi antenna gain max. 5 dBi

Transmission power max. 2 W

Antenna type Passive Antenna

Dimensions 200 x 60 x 75 mm³ (L x W x H)

Protective hose -

Antenna cable 1500 mm (K)

Mobile radio connection 2x FAKRA socket Code D Bordeaux

WiFi radio connection 2x FAKRA socket Code K Curry

Weight 250 g

Temperature range -40 °C to +85 °C

Humidity 10 % to 90 % without condensate

Protection class IP68 (when installed)

Cable entry -

Special feature no galvanic connection is necessary underneath the electrically conductive ground surface

Fastening UV-resistant assembly adhesive e.g. Sikaex, Dekalin (not included)

Mechanics

Service

More information can be found here:
www.antretter-huber.com/service

If you have any questions, please contact us at:
service@antretter-huber.com

Stay in touch with us:



facebook.com/AntretterundHuber



instagram.com/antretterundhuber



youtube.com/@antretterhuber831

Thank you for choosing our product.
We hope you enjoy it.



WEEE No.: DE 50397397





Antretter & Huber GmbH
Irsham 55
94081 Fürstenzell
www.antretter-huber.com